

# INW Turbo Turbidity Sensor

## WITH DATA LOGGING

# Seametrics

## APPLICATIONS

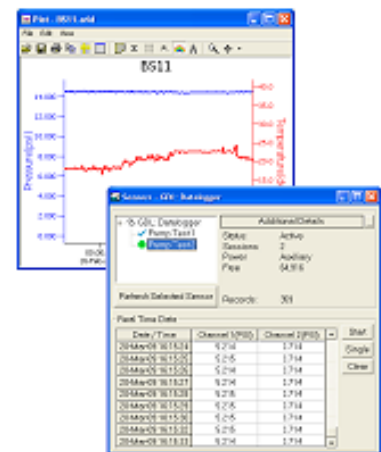
- Monitoring streams and rivers
- Monitoring water storage bodies, including stratification studies
- Intermediate and final effluent treatment monitoring
- Hydrological run-off studies
- Ground and bore water analysis
- Drinking water filtration efficiency
- Industrial process monitoring
- Sludge and dredge monitoring



## Features

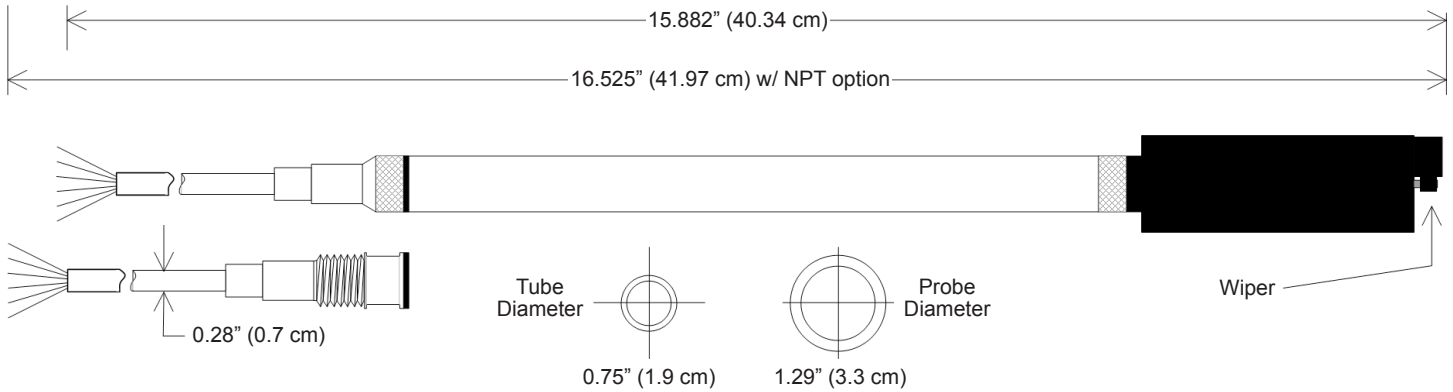
- Measures and records turbidity and temperature
- Modbus® RTU (RS485) and SDI-12 interface — *great flexibility*
- 260,000+ record non-volatile memory — *no data loss in the event of a power failure*
- Wireless connectivity — *radios and/or cellular*
- Programmable warm-up time
- Free, easy-to-use software
- Replaceable wiper blade

Contact Your Supplier



## Free Software

- Set up flexible recording sequences
- Retrieve data
- Monitor real time data
- View collected data — *tables & graphs*
- Export to spreadsheets and databases with a click of a button



**GENERAL**

<b>Length</b>	15.882" (40.34 cm) w/ cable harness 16.525" (41.97 cm) w/ NPT adapter
<b>Probe Diameter</b>	1.29" (3.3 cm)
<b>Tube Material</b>	Acetal & 316 stainless steel or titanium
<b>Probe Material</b>	Composite
<b>Wire Seal Material</b>	Fluoropolymer and PTFE
<b>Submersible Cable</b>	Polyurethane, polyethylene, or ETFE available
<b>Terminating Connector</b>	Available
<b>Communication</b>	RS485 Modbus® RTU SDI-12 (ver 1.3)
<b>Direct Modbus Read Output</b>	32-bit IEEE floating point
<b>Internal Math</b>	32-bit floating point
<b>Operating Temp. Range</b>	0° C to 40° C
<b>Storage Temp. Range</b>	-20° C to 50° C

**SENSOR**

<b>Measuring Ranges</b>	0–400 NTU 0–3000 NTU
<b>Accuracy</b>	± 2% or ± 2 NTU @ 25° C (whichever is greater)
<b>Repeatability</b>	± 2% @ 25° C
<b>Temperature Range</b>	0° C to 40° C
<b>Maximum Depth</b>	164 ft (50 m)

**POWER**

**External Power Pack Required** 12 Vdc nominal (9–16 Vdc)  
INW Power Packs available.  
Contact INW for details.

**LOGGING**

<b>Memory</b>	260,000+ records
<b>Log Types</b>	Variable, user-defined, logarithmic, profiled
<b>Programmable Baud Rate</b>	9600, 19200, 38400
<b>Logging Rate</b>	2x/sec maximum
<b>Software</b>	Complimentary Aqua4Plus
<b>Networking</b>	32 available addresses per junction w/ batching capabilities (up to 255)
<b>File Formats</b>	.xls / .csv / .a4d