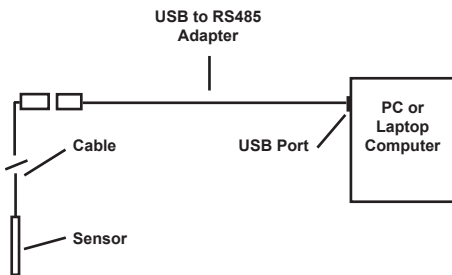




Connecting the Sensor to a Computer

In its standard configuration, the Smart Sensor cable is terminated with a weather-resistant connector. Connect the weather-resistant connector to your PC or laptop via INW's USB/RS485 cable, as shown below.



Installing Aqua4Plus Lite

If your software is supplied on USB stick:

1. Insert the USB stick into PC or laptop. Installation should start automatically. If not, then follow steps 2 and 3. Otherwise, skip to step 4.
2. Using Windows Explorer, navigate to the Aqua4Plus Lite folder on the USB stick.
3. Double-click on setup.exe.
4. The installation program will guide you through the installation process.

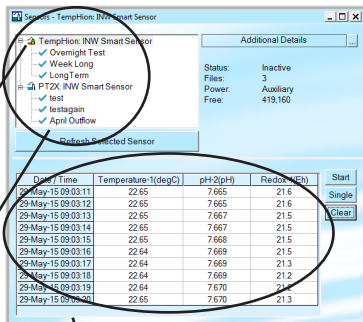
From the Internet:

1. Download Aqua4Plus Lite from www.inwusa.com/technical-library/software-downloads.
2. Unzip the file onto your computer.
3. Double click setup.exe
4. The installation program will guide you through the installation process.



Selecting a Sensor

- Open the Sensor Window by clicking the Scan tool button. A list of connected sensors will appear on the Sensor Map.
- On the Sensor Map, click on the desired sensor. Information regarding the selected sensor will display in the Sensor Information Panel to the right of the Sensor Map.
- Click the + next to the desired sensor on the Sensor Tree. A list of data sessions stored in the sensor will display in the Sensor Tree below the selected sensor.



Setting up Data Recording

Before you can collect data in the sensor, you must create a Logging Schedule.

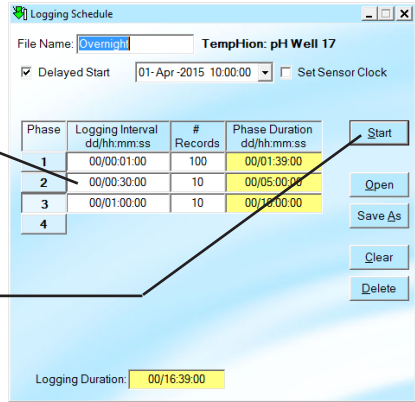
- **Start a new schedule:** Click the Logging tool button. A Logging Schedule will open.
- **Name your data file:** Enter a name in the File Name box.

Real Time Monitor


Use this to view live readings from the sensor that is selected on the Sensor Map. These readings are not being recorded in the sensor, but only being displayed for viewing.

- Click *Single* to get a single reading.
- Click *Start* to get a reading once a second.
- Click *Stop* to stop the reading.



- Describe a test phase:
 - Click the number at the beginning of the test phase.
 - Use the **Tab** key on the keyboard to move to the logging interval column, and enter your sample interval for this phase as dd/hh:mm:ss.
 - Enter the number of samples to record at this logging interval, and then press the **Tab** key. You will automatically move to the next phase's logging interval field.
 - Continue entering phases as above.
- Start the test: Click the Start button. (See manual for details on the Delayed Start and other features.)

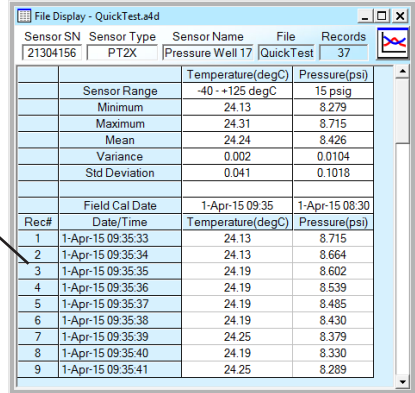


Retrieving Data from the Sensor


- Click on the file you want to retrieve.
- Click the Retrieve  tool button.
- Select a file location.
- Click Save.
- Click Start.

Viewing Data


- Click the Open  tool button to view data as a table.
- Click the graphing  tool button on the table to view data as a graph.
- Navigate to the desired file, then click the Open button.

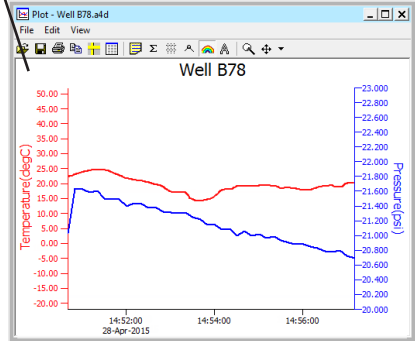


Exporting Data to .csv or .xls Files

- Click the Open  tool button and open the file as a table.
- Click on the Export  tool button.
- Select a file location and enter a name for the file.
- Select a file type.
- Click Save.

Settings and Calibration

- Click the Settings  tool button to adjust settings and calibration on the sensor. Refer to the sensor manual for details.



Program Configuration Menu

- Set Computer Display Units
- Set Scan Range
- Barometric Compensation Utility
- Install USB/RS485 Drivers
- Set Default Data Folder



Sensor Configure Menu

- Erase All Data
- Set Sensor Address
- Set Sensor Clock
- Set Sensor Description
- Set Direct Read Units

