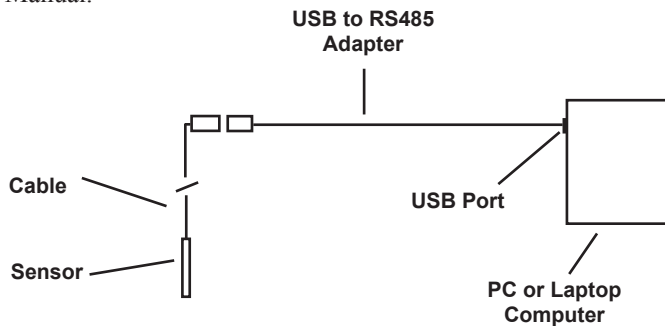


### Connecting the Sensor to a Computer

In its standard configuration, the Smart Sensor cable is terminated with a weather-resistant connector. Connect the weather-resistant connector to your PC or laptop via INW's USB/RS485 cable, as shown below. For COM port or alternate USB connections, see the Aqua4Plus Instruction Manual.



### Installing the Aqua4Plus Software

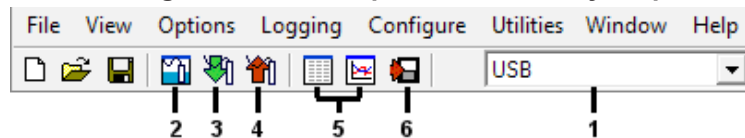
*If your software is supplied on USB stick:*

1. Insert the USB stick into your PC or laptop.
2. Using Windows Explorer, navigate to the Aqua4Plus Standard folder on the USB stick.
3. Double click on setup.exe
4. The Installation program will guide you through the installation process.

*From the Internet:*

1. Download Aqua4Plus from [www.inwusa.com/technical-library/software-downloads](http://www.inwusa.com/technical-library/software-downloads).
2. Unzip the file onto your computer.
3. Double click setup.exe
4. The Installation program will guide you through the installation process.


### Getting Started with Aqua4Plus in 6 Easy Steps

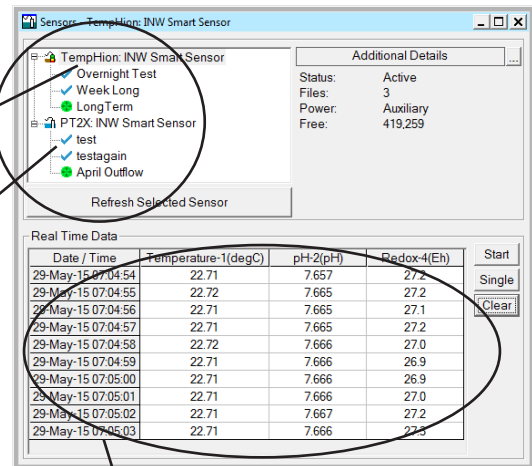


#### 1 - Selecting a Communication Port

Select the USB or COM port to which your sensor is connected.

#### 2 - Selecting a Sensor


- Open the Sensor Window by clicking the  tool button. A list of connected sensors will appear on the Sensor Map.
- On the Sensor Map, click on desired sensor. Information regarding the selected sensor will display in the Sensor Information Panel to the right of the Sensor Map.
- Click the + next to the desired sensor on the Sensor Tree. A list of data sessions stored in the sensor will display in the Sensor Tree below the selected sensor.



Sensor Window

#### 3 - Setting up Data Recording

Before you can collect data in the sensor, you must create a Logging Schedule.

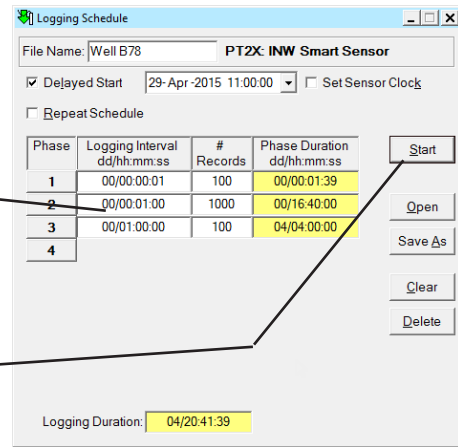
- Start a new schedule: Click the  tool button. A Logging Schedule Window will open.
- Name your data file: Enter a name in the File Name box.

#### Real Time Monitor

Use this to view live readings from the sensor that is selected on the Sensor Map. These readings are not being recorded in the sensor, but only being displayed for viewing.

- Click *Single* to get a single reading.
- Click *Start* to get a reading once a second.
- Click *Stop* to stop the reading.

- Describe a test phase:
    - Click the number at the beginning of the test phase.
    - Use the **Tab** key on the keyboard to move to the logging interval column, and enter your sample interval for this phase as dd/hh:mm:ss.
    - Enter the number of samples to record at this logging interval, then press the **Tab** key. You will automatically move to the next phase's logging interval field.
    - Continue entering phases as above.
  - Start the test: Click the Start button.
- (See manual for details on the Delayed Start and other features.)



*Logging Schedule Window*

#### 4 - Retrieving Data from the Sensor

- Click on the file you want to retrieve.
- Click the tool button.
- Select a file location.
- Click Save.
- Click Start.

Sensor SN	Sensor Type	Sensor Name	File	Records
215125	PT2X	INW Smart Sensor	Well B78	102

	Temperature(degC)	Pressure(psi)
Sensor Range	-40 - +125 degC	15 psig
Minimum	20.81	14.736
Maximum	21.19	14.737
Mean	21.07	14.736
Variance	0.007	0.0000
Std Deviation	0.086	0.0002

Field Cal Date	29-Apr-15 10:08	29-Apr-15 10:08	
Rec#	Date/Time	Temperature(degC)	Pressure(psi)
1	29-Apr-15 10:14:06	20.81	14.736
2	29-Apr-15 10:14:07	20.88	14.736
3	29-Apr-15 10:14:08	20.88	14.736
4	29-Apr-15 10:14:09	20.94	14.736
5	29-Apr-15 10:14:10	20.94	14.736
6	29-Apr-15 10:14:11	20.94	14.736
7	29-Apr-15 10:14:12	20.94	14.736
8	29-Apr-15 10:14:13	20.94	14.736
9	29-Apr-15 10:14:14	20.94	14.736
10	29-Apr-15 10:14:15	20.94	14.736

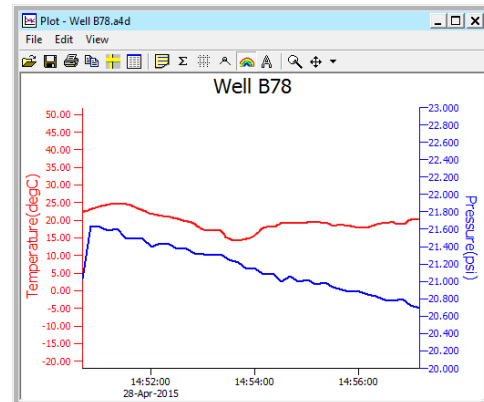
*File Display Window*

#### 5 - Viewing Data

- Click the tool button to view data as a table.
- Click the tool button to view data as a graph.
- Navigate to the desired file, then click the Open button.

#### 6 - Exporting Data to .csv or .xls Files

- Click the tool button to view data as a table.
- Click on the tool button.
- Select a file location and enter a name for the file.
- Select a file type.
- Click Save.



*Graph Window*

#### Options Menu

- Display Units
- Default Data Folder
- Communication Settings
- Baud Rate

See manual for details.

#### Configure Menu

- Sensor Clock Settings and Calibration
- Sensor Address
- Sensor Description
- Erase All Sessions
- Advanced

See manual for details.

