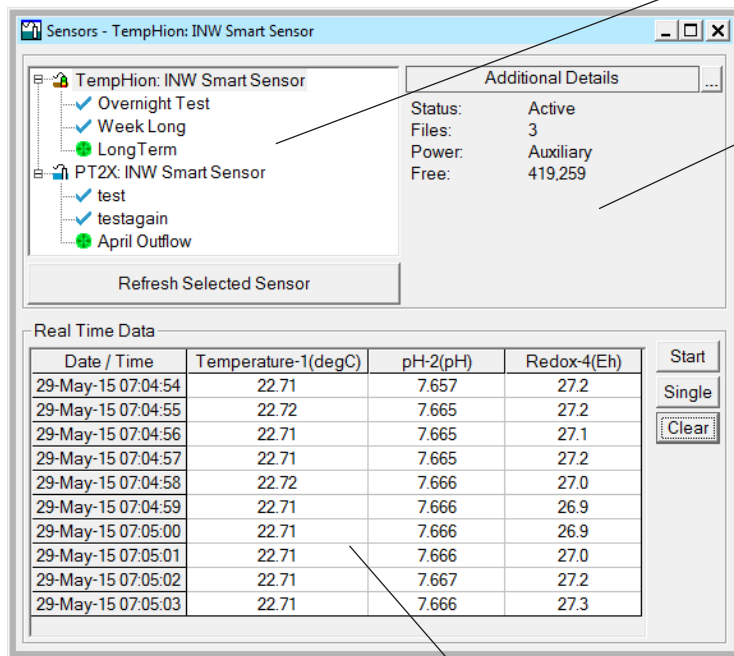




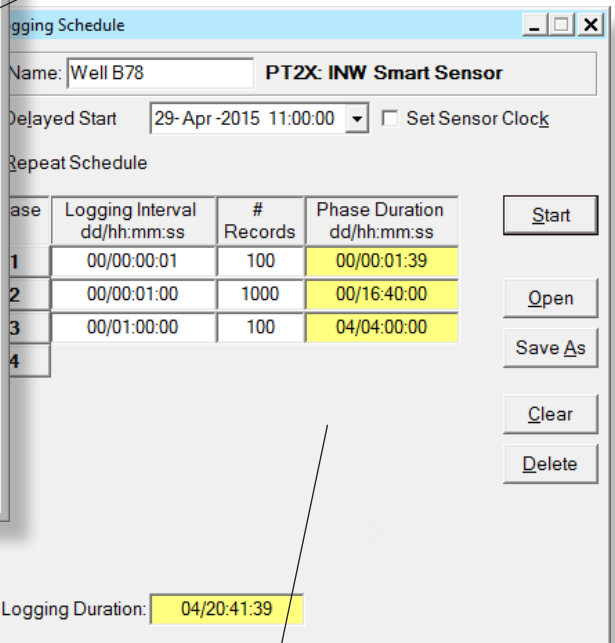
APPLICATIONS

- Multi-layered control program for all INW Smart Sensors
- Access multiple sensors, each with multiple test sessions
- Control a network of sensors
- View sensor status and monitor real-time data
- Create flexible and powerful test sequences
- Display data in tabular or graphic format
- Easy export into spreadsheets and databases

Access several sensors, each with multiple test files



View sensor status



Contact Your Supplier

Monitor real time data

Create flexible and powerful test sequences

System Requirements

- Desktop or laptop computer running WinXP(SP3) or higher
- 20 MB free hard drive space
- USB port for installing the program and for communicating with sensors. (The program can also be installed over the Internet.)
- NOTE: The software may not work reliably on ultra-high definition (4K) laptops and monitors.

Features

- Controls all INW Smart Sensors
- USB connectivity
- Single, batch, event, or repeat logging (depending on sensor type)
- Delayed start feature to coordinate data collection
- Easy-to-use calibration utility
- Barometric compensation utility
- Export to .csv
- Export to .xls (Windows XP, 7, 8, and 8.1 only)

File Display - Well B78.a4d

Sensor SN	Sensor Type	Sensor Name	File	Records
215125	PT2X	INW Smart Sensor	Well B78	102
Sensor Range		-40 - +125 degC	15 psig	
Minimum		20.81	14.736	
Maximum		21.19	14.737	
Mean		21.07	14.736	
Variance		0.007	0.0000	
Std Deviation		0.086	0.0002	
Field Cal Date		29-Apr-15 10:08	29-Apr-15 10:08	
Rec#	Date/Time	Temperature(degC)	Pressure(psi)	
1	29-Apr-15 10:14:06	20.81	14.736	
2	29-Apr-15 10:14:07	20.88	14.736	
3	29-Apr-15 10:14:08	20.88	14.736	
4	29-Apr-15 10:14:09	20.94	14.736	
5	29-Apr-15 10:14:10	20.94	14.736	
6	29-Apr-15 10:14:11	20.94	14.736	
7	29-Apr-15 10:14:12	20.94	14.736	
8	29-Apr-15 10:14:13	20.94	14.736	
9	29-Apr-15 10:14:14	20.94	14.736	
10	29-Apr-15 10:14:15	20.94	14.736	

Display data in tabular or graphic format

