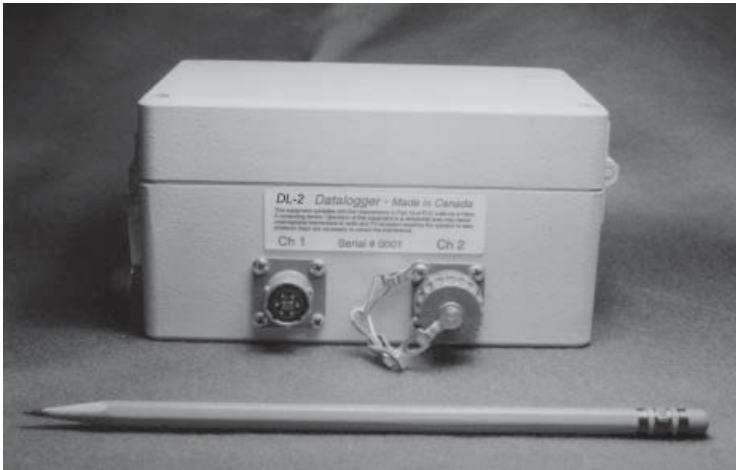


# AquiStar® DL-2

## DATA COLLECTION SYSTEM



### FEATURES

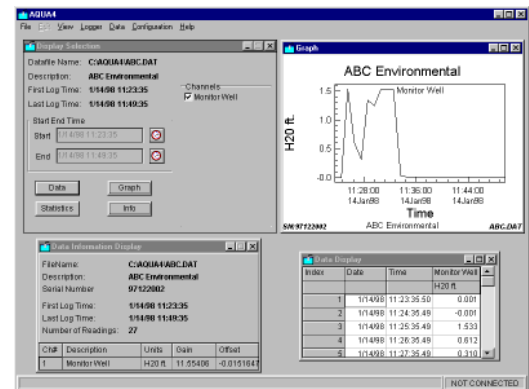
- Rugged, portable, compact
- 15 Bit resolution
- Up to 64K readings
- Windows based software
- 2 Channel capacity
- Uses standard alkaline D-cells
- Powers 4-20mA sensors
- Non volatile memory

### DESCRIPTION

INW's AquiStar® DL-2 is a compact 2 channel data logger housed in a rugged water resistant cast aluminum case. The DL-2 may be used to monitor 4-20 mA sensors and has data storage capabilities of up to 64,000 15 bit readings (64K) before downloading. A pre-installed Windows based control and data analysis program and quick connects, which complete the sensor/computer connection, make for simple installation and easy operation. The DL-2 also features low-power sleep modes and non-volatile EEPROM memory.

### OPERATION

AquiStar® DL-2 data loggers are ideal for portable or permanent field data logging applications. Depending on the project, a variety of water quality sensors may be attached to a unit's input. Each logger may be easily programmed to collect data in engineering units of choice as well as on a fixed or logarithmic timing sequence. Transferring data from the logger normally occurs with a portable PC where data can then be processed via the provided Aqua4 software.



Aqua4 Software

### APPLICATIONS

- Stormwater discharge monitoring
- Pump and slug tests
- Water quality monitoring
- Irrigation control
- Stream gauging



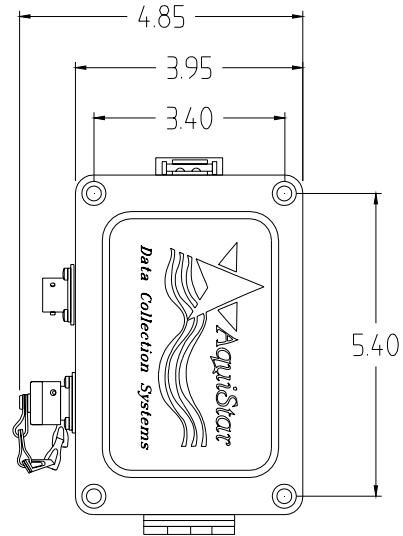
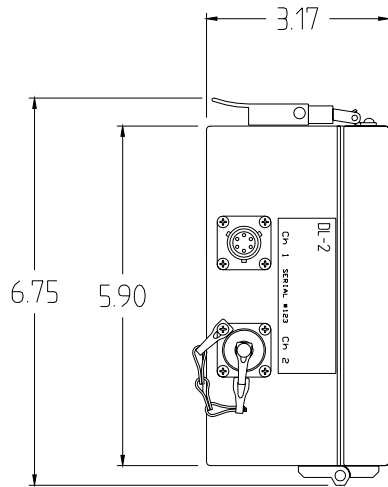
**INSTRUMENTATION  
NORTHWEST, INC.**

**1-800-776-9355**  
<http://www.inwusa.com>



# DATA COLLECTION SYSTEM

## DIMENSIONS AND SPECIFICATIONS



### HOW TO ORDER

- Specify data collection system.
- Order optional serial cable.
- Order additional sensors and cable as needed.

#### DL2 DATA COLLECTION SYSTEMS

|              |                                               |
|--------------|-----------------------------------------------|
| <b>6D250</b> | DL-2 Data Collection System w/ Aqua4 Software |
| <b>6D039</b> | Serial Cable 9pin-to-9pin                     |

Information in this document is subject to change without notice.

### MECHANICAL

|                         |                     |
|-------------------------|---------------------|
| <b>Channels</b>         | 2 analog            |
| <b>Weight</b>           | 3.1 lbs.            |
| <b>Housing Material</b> | Cast Aluminum NEMA4 |

### ELECTRICAL

|                            |                                 |
|----------------------------|---------------------------------|
| <b>Sensor Excitation</b>   | 11 VDC                          |
| <b>Signal Conditioning</b> | 4-20 mA                         |
| <b>Resolution</b>          | 15 bits (1 part in 32,000)      |
| <b>Accuracy</b>            | ±0.03%                          |
| <b>I/O</b>                 | RS232 (9600 baud. 9 pin female) |
| <b>Power Requirements</b>  | 4.5 VDC                         |
| <b>Operating Temp.</b>     | -20 °C to +50°C                 |
| <b>Memory</b>              | 64 K                            |

### INSTRUMENTATION NORTHWEST, INC.



#### Sales and Service Locations

8902 122nd Ave NE, Kirkland • Washington 98033 USA  
 (425) 822-4434 • (425) 822-8384 FAX • info@inwusa.com  
 4620 Northgate Boulevard, Suite 170 • Sacramento, California 95834  
 (916) 922-2900 • (916) 648-7766 FAX • inwsw@inwusa.com

**1-800-776-9355**  
<http://www.inwusa.com>